

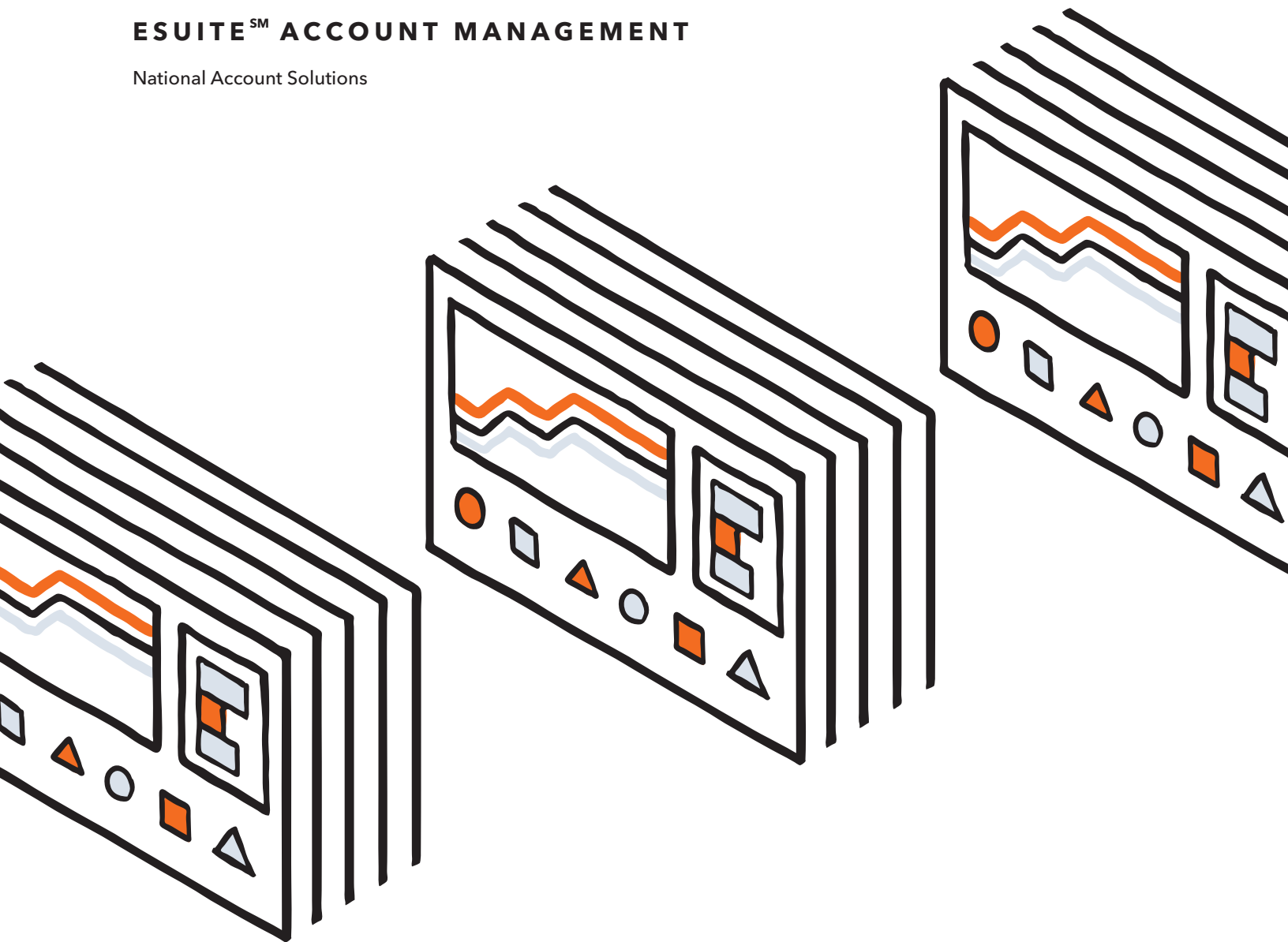


We help you keep a finger on the pulse of multi-location organizations.



ESUITESM ACCOUNT MANAGEMENT

National Account Solutions





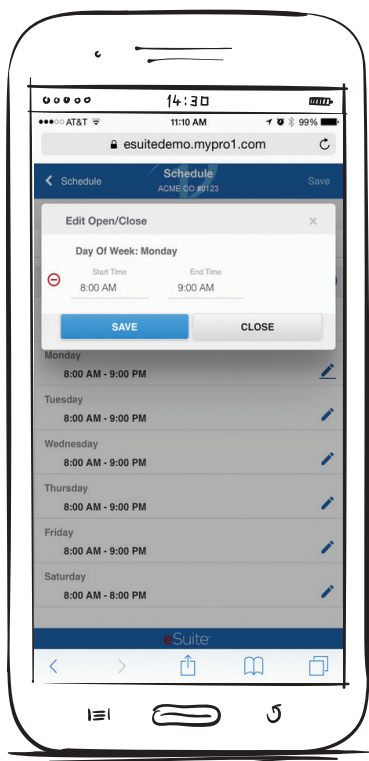
See your location data in a whole new light—and streamline the management of your enterprise.

With intuitive functionality, transparent data reporting and groundbreaking design, eSuite sets a new industry standard in user-application portals. We continue to enhance our capabilities to better support your security needs.

eSuite puts your data to work for you.

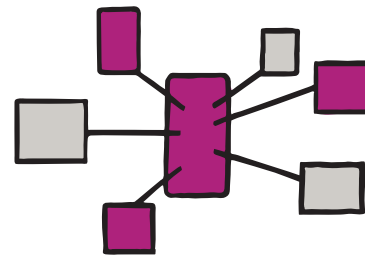
This next-generation account management tool is highly intuitive to help multi-location customers keep a finger on the pulse of their organization.

The new mobile interface adds an incredible amount of flexibility, allowing your team to utilize key features of eSuite on their mobile devices.



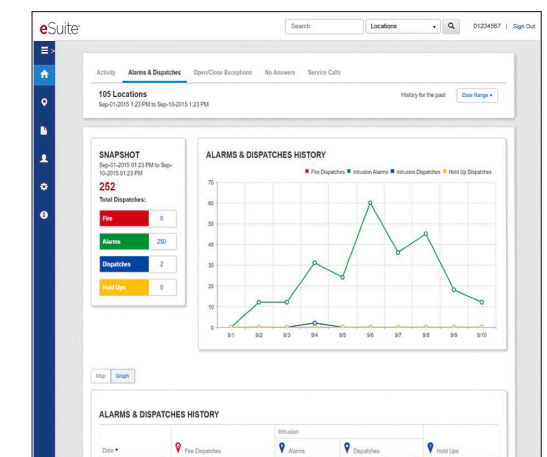
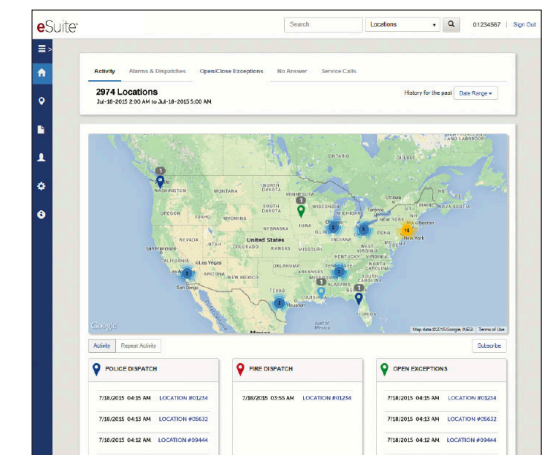
eSuite mobile for the way you work today

- ☒ Create temporary location schedules
- ☒ View and edit location contacts
- ☒ Place intrusion alarm panels on or off test



Activity dashboards

Activity dashboards let you quickly view critical location activity in a summary activity map or as a trending graph. You can easily define a specific time period and then drill down using individual activity maps and graphs.



It's feature rich and user-friendly.

Access control features integration to cell or IP communication connected panels and allows for powerful efficiency and control over remote site permissions. In addition to existing real-time panel code edits, authorized users can now remotely edit, add and remove access control credential permissions in real time.

Arm/disarm and system status with cell or IP-connected panels allow display of system status on eSuite dashboard (armed, disarmed, or armed with bypass). Authorized users can arm and disarm systems remotely through eSuite.

Contact management is a breeze. Edit location contacts and implement permissions by territory, level or title—with the ability to effortlessly modify contact information for a single location or for multiple locations at once.

Dashboard notifications can be quickly configured to send selected daily dashboard activity notifications via email, keeping your team in the loop and on top of anomalies.

Dual-factor authentication allows the eSuite administrator to enable dual-factor authentication for their company's eSuite users to assist with increased security protection.

Keypad code management is an optional feature that allows your authorized users to request edits to location contact keypad panel codes at one or multiple locations—plus, users of IP or cell communication path panels can make those edits instantly.

Location information becomes much more actionable when you have access to panel information for all locations and can store location-specific information for easy retrieval—including installed product photos, fire alarm inspection documents and more.

Location permission management lets you assign location permissions to your key personnel by territory or site, along with access to specific features and the functions that you choose to share.

Permit management allows you to input location permit numbers and expiration dates for convenient reporting and renewal tracking. Permit management services are also available.

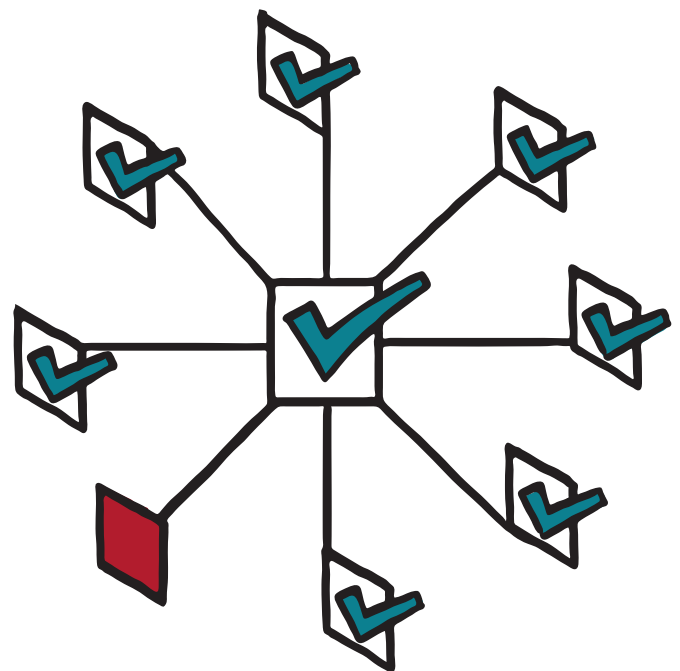
Product inventory features allow you to run reports of all products we have installed at your locations. You can quickly view install dates, warranty and maintenance expiration dates, and approximate replacement costs for budgetary planning.

Reporting features are robust and empower you to run dozens of standard activity and exception reports in real time, or schedule reports for recurring delivery via email.

Schedules change often so we allow you to modify existing schedules or create temporary schedules with "drag-and-drop" ease.

System tests can be handled anytime, with the ability to place an intrusion alarm system on test and remove from test, online. Watch test signals check into our central station.

Video verification is a "must have" where a "verified" alarm is required to ensure a prompt response by law enforcement. Video verification service allows your security team to view video associated with intrusion alarm activity via eSuite for up to a year after each event.





ADT Commercial



Powered by Experience. Driven by Excellence.

ADT has been serving businesses for more than 145 years. After splitting from its parent company in 2012, ADT emerged as a separate company initially focused on home and small business security. Since then, ADT merged with Protection 1, building upon its commercial capabilities and customer focused approach with over 10 strategic acquisitions. ADT Commercial is founded on decades of experience serving commercial and National Account clients.

We've grown our commercial technical competency to serve customers in a unique way—with the scale and expertise to help meet your needs throughout the U.S. and Canada. Our leadership has a single-minded focus on our commercial customers—having spent the majority of their careers in the security, fire and life safety industries. ADT Commercial was formed to focus on the disciplines required to help meet the complex needs of our commercial clientele. Our National Account team will help ensure consistent delivery to your custom specifications across your footprint.

Protection1

Expertise in delivering customer service excellence and servicing multisite National Accounts.

asg

Offering risk management consultancy and expertise servicing Fortune 1000 and global enterprises.

 **RED HAWK**

Providing leadership in fire, life safety and integrated security solutions.



Our employees and their motivation set us apart. We relentlessly focus on the customer experience—delivering what our customers want, when they want it—and keeping our promises.

We are committed to customer service excellence.



We provide customers with the best of both worlds—a strong North American company with local offices providing a quality service experience.



We created a National Account program that makes it easy for you to do business with us by offering a single point of contact and dedicated teams to proactively manage your program.



We strive to answer calls within a few rings—with no automated phone systems. Same-day service is our goal, not an upcharge. We have thousands of in-house technicians to help us deliver this exceptional service response.



Our enterprise-level solutions include Lenel OnGuard, Honeywell Pro-Watch, Software House, AMAG Technology, Genetec, Avigilon and Milestone. In select markets, we also offer Edwards, Notifier and Gamewell FCI.



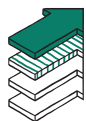
We dispatch technical personnel certified to service the systems at your sites, and they show up on time with the right equipment. We also email you an expected service time arrival and technician picture, so you know what to expect, and when.



We have dedicated commercial and National Account monitoring centers—redundant and listed by Underwriters Laboratories. We provide monitoring and advanced network services through our own National Account Operations Center and two Network Operations Centers.

Our Commitment to Customers

These guiding principles are the foundation of ADT Commercial. They drive our success as we strive to deliver customer service excellence at every point of interaction.



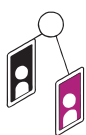
Customers are Our True North

We know that our reputation is based on how we serve our customers.



Our People are the Difference

We strive to be the best technically-trained team in the business.



Dedicated to Commercial Security

We are 100% focused on our commercial customers.



One Ideal Partner

We are the premier holistic solutions partner—a full-service national company with nimble local delivery teams.

Let's start a conversation.

We make it easy to switch providers, and our onboarding process is predictable, dependable and painless. You will be assigned a dedicated team to help with recommending and implementing the solutions that fit your needs.



833.238.5224

adt.com/commercial

ADT Commercial

Powered by Experience. Driven by Excellence.



SSI
Integrated Installation
(Multi-Site) 2018



SSI
Installer of the Year
2018



SDM
Dealer of the Year
2017



TMA
Five Diamond
Certification



A+ BBB Rating
Accredited
Business