

ADT Motion Detector

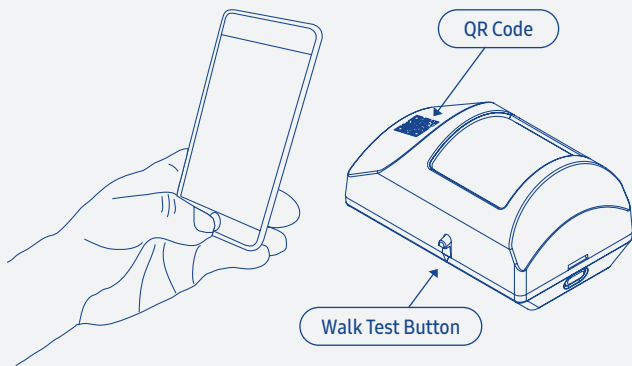
Setup Guide



A Setup

1. Take the ADT Motion Detector to where you intend to mount it after setup. 2.
- Make sure you are within 350 feet from the ADT Security Hub. (Exact range depends on your home's construction, the environment, the position of the ADT Security Hub, and the position and number of other connected devices.) 3.
- Make sure that your ADT Security Hub is disarmed before connecting a new device.
- Make sure that you only setup one new device at a time.
- Do not remove the battery tab until you are ready to set up the detector. ✓

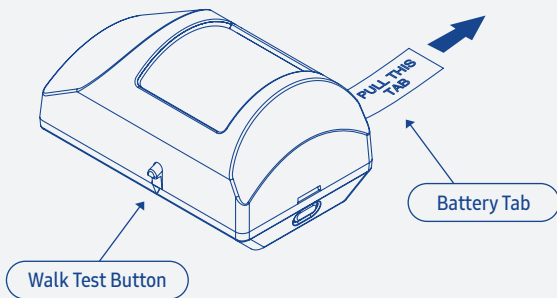
2. Use the SmartThings app on your smartphone to select the "My Home" tab. Select "Things", and then "Add a Thing".
3. Use the SmartThings app to scan the QR code on the front of the detector and then follow the on-screen instructions to complete setup.



Setup

4. Remove the tab on the detector marked “Pull This Tab”.

5.



5. Remove the QR code from the front of the detector and attach it inside the ADT Security Hub User Guide for future reference.

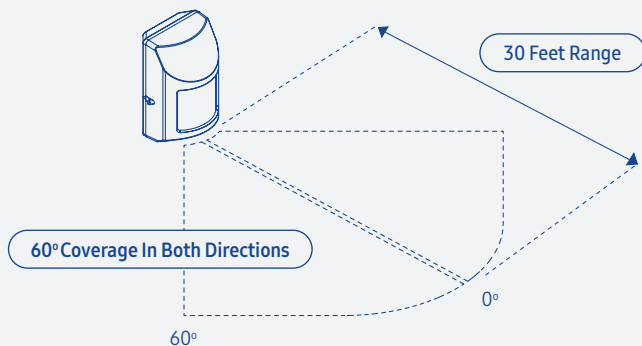
B Placement

Place the ADT Motion Detector in a high-traffic area where an intruder would be likely to pass within a 30-foot range, e.g. living room or hallway.

- Make sure that there are no objects blocking the detector's view and that it's in a stable location.
- Make sure you do not aim the detector at stairs, furniture, or other surfaces that a pet might climb on.
- Make sure that you do not place the detector in a room where large pets (over 55 lbs) may be present and could cause false alarms.
- Make sure that you do not place the detector near a source of heat that could cause false alarms, e.g. a heating vent or fireplace.

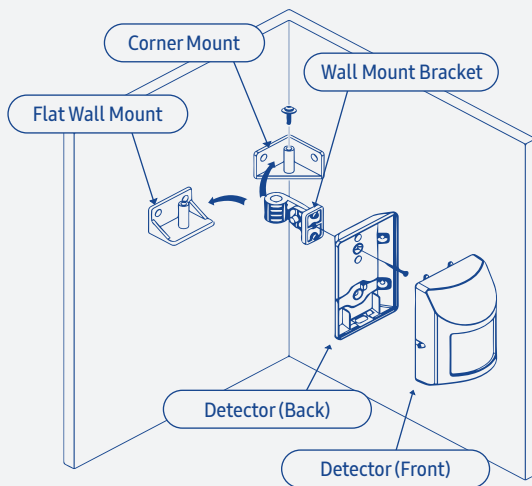
Placement

- Make sure that you do not place the detector facing windows where car headlights could cause false alarms.



C Mounting

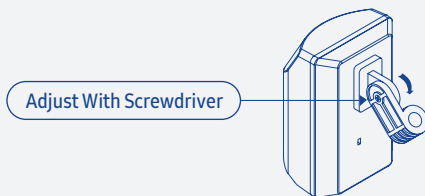
1. Pick a location 6.5 to 7.5 feet above the floor and mount the detector on a flat wall or in a corner.



2.

You
wa

2. Adjust the angle of the detector using a screwdriver.



You can also use the supplied mounting tape if you do not want to use the wall bracket.



D Testing

You can test the coverage of the ADT Motion Detector by pressing the Walk Test button on the side. For the next 10 minutes, the red LED will illuminate when it senses movement, allowing you to adjust the aim of the detector to cover the desired protection area. Note that each time the red LED illuminates, a signal will be sent to the ADT Security Hub.

You can test your ADT Motion Detector by performing a Walk Test on the ADT Security Hub, walking through the detection field and then checking its status on the ADT Security Hub touchscreen. See the ADT Security Hub User Guide for more details.

Note: If you have an ADT professional monitoring service activated, additional testing is required whenever you connect a new device. Follow the on-screen instructions in the SmartThings app to complete testing.

E

1.

2.

3.

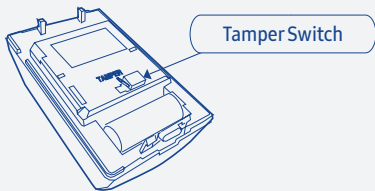
4.

If y
Det
ass

E Troubleshooting

If the detector did not pair successfully with the ADT Security Hub, follow these instructions to reset it:

1. Press and release the Tamper Switch on the detector twice.
2. Press and hold the Tamper Switch. The red LED will begin to blink quickly, and after a short period of time will stay on.
3. Release the Tamper Switch and after 5 seconds the red LED will begin to blink slowly.
4. Use the SmartThings app to complete setup.



If you're still having trouble connecting the ADT Motion Detector, please visit [SmartThings.com/Support-ADT](https://www.smartthings.com/support-adt) for assistance.

F Suggestions

The ADT Motion Detector monitors motion in a defined area of your home. When motion is detected, a notification is sent wirelessly to your ADT Security Hub.

Your ADT Security Hub can then send an alert to your smartphone, automate connected devices, or initiate optional ADT professional monitoring services (additional fees apply).

Suggestions

There are many ways you can use an ADT Motion Detector in your home:

- Put one in your hallway or near your back door and set it to initiate optional ADT professional monitoring services if an intrusion is detected in your home (additional fees apply).
- Put one in your basement and set it to send you a message if unexpected activity is detected.
- Put one in your hallway and set it to turn on connected lights when motion is detected.
- Put one in your living room and set it to turn off connected lights when everyone's gone.

Suggestions

- Put one in your storage room and set a connected camera to send you a video alert when unexpected activity is detected (additional fees may apply).

Note: To ensure proper functioning, all connected devices must be configured correctly.

Visit SmartThings.com/Welcome for more ideas, tips, and special offers.

G

Sm
de
an
an
wi

Lo
yo
Sm
de

G Works With SmartThings

SmartThings works with a wide range of connected devices, including lights, cameras, locks, thermostats, and sensors. It also works with the **Google Assistant** and **Amazon Alexa** so you can control your smart home with voice commands.

Look for the **Works with SmartThings** label next time you're buying a connected device for your home, or visit **SmartThings.com** to see the full list of compatible devices.



SmartThings, Inc., 665 Clyde Ave, Mountain View, CA 94043, USA. Information in this document is subject to change without notice. Copyright 2017 SmartThings, Inc. All rights reserved. ADT and the ADT logo are marks and/or registered marks of ADT. Unauthorized use is strictly prohibited. Revised 06/17.

P/N 10015709C