



**ADT Pulse[®] Interactive Solutions
RC8021W-ADT
Wireless Indoor Camera
Installation Guide**

Table of Contents

INTRODUCTION	1
Overview	1
RC802 1W-ADT Features	1
Package Contents	1
Physical Details – RC802 1W-ADT	2
Front	2
Rear	3
INSTALLATION	4
Configuring the RC802 1W-ADT	4
Adding the RC802 1W-ADT to the ADT Pulse Wireless Network	4
APPENDIX A: SPECIFICATIONS	9
APPENDIX B: REGULATORY APPROVALS	10
FCC Statement	10
CE Approvals	10

UNITED STATES LICENSE INFORMATION: **AL** Alabama Electronic Security Board of Licensure, 7956 Vaughn Rd., Montgomery 36116, (334) 264-9388; **AK** 37950, 5520 Lake Otis Pkwy., Anchorage, AK 99507; **AR** E12-041, Regulated by Arkansas Bd. of Private Investigators & Private Security Agencies, #1 State Police Plaza Dr., Little Rock, AR 72209, (501) 618-8600; **AZ** ROC 279591; **CA** ACO7155, alarm company operators are licensed and regulated by the Bureau of Security & Investigative Services, Dept. of Consumer Affairs, Sacramento, CA 95814, 974443, PPO17232; **CT** ELC.0106069-L5; **DC** ECS902743; **FL** EF0001121; **GA** LVA205265, -205326, -205572, -205679, -205878, LVU405673, -004349; **HI** CT-32297; **ID** ELE-SC-2643; **IL** 124001792; **LA** F1639, F1640, F1643, F1654, F1655; **MA** 172C; **MI** 3601206258, 5103208 - 4182 Pier North Dr. Ste. D, Flint, **MI** 48504; **MN** TS650251; **NC** 7535P2, 7561P2, 7562P10, 7563P7, 7565P1, 7566P9 - Alarm Systems Licensing Bd., 4901 Glenwood Ave, Ste. 200, Raleigh, 27612 (919) 788-5320; **NM** 374838; **NV** 0077105; **NJ** Electrical Contractor Lic. #'s 34FA00140500, 34BA00179000, 7895 Browning Rd., Pennsauken, NJ 08109; **NY** 12000305615, Licensed by NYS Dept. of State; **OH** 50-18-0018, 50-25-0023, 50-29-0003, 50-31-0014, 50-48-0008, 50-50-0005, 50-76-0006, 50-89-0016, 53-89-1726; **OK** 1995; **OR** 196560; **PA** Pennsylvania Home Improvement Contractor Registration Number: PA090797; **RI** 35683; **TN** ACC-1688, -1689, -1690, -1691, -1692, -1693, -1694, -1695, -1696; **TX** B17944 - 140 Heimer Rd. Ste. 100, San Antonio, **TX** 78232 - Texas Private Security Bureau, 5805 N. Lamar Blvd., Austin 78752; **UT** 8289653; **VA** 11-7345, 11-7348, 11-7351, 11-7354, 11-7598, 11-7900, 11-8205, 11-8353, 11-8447 2705147728 Class B Contractor Classification ESC; **WA** ADTLLL881DO, 11824 N Creek Pkwy #105, Bothell, WA 98011; **WI** 1210943; **WV** 049758.

MS 15019511

©2013 ADT LLC dba ADT Security Services. All rights reserved. ADT, the ADT logo, 800 ADT.ASAP and the product/service names listed in this document are marks and/or registered marks. Unauthorized use is strictly prohibited.

Canada Licence number: RBQ 3019-4070-50. ©2013 ADT Security Services Canada, Inc. All rights reserved. ADT, the ADT logo, 800.ADT.ASAP and the product/service names listed in this document are marks and/or registered marks. Unauthorized use is strictly prohibited.

Introduction

This installation guide provides step-by-step instructions for configuring and installing the RC8021W-ADT Wireless Indoor Camera to the ADT Pulse® wireless network.

Overview

The RC8021W-ADT Wireless Indoor Camera (hereafter referred to as the *wireless camera*) uses the latest technology to stream high quality, live video through your gateway.

RC8021W-ADT Features

- Easily enrolls to your ADT Pulse Wireless Network
- VGA resolution (640x380) at 30 frames per second
- Supports MPEG-4 and M-JPEG Dual Video Streaming for Clear, Crisp Viewing
- Provides Improved Security through Advanced Data Encryption

Package Contents

1. RC8021W-ADT Wireless Indoor Camera
2. Antenna
3. 5V/1A Power Adapter
4. Adjustable Stand
5. Installation Guide

Physical Details – RC8021W-ADT

Front

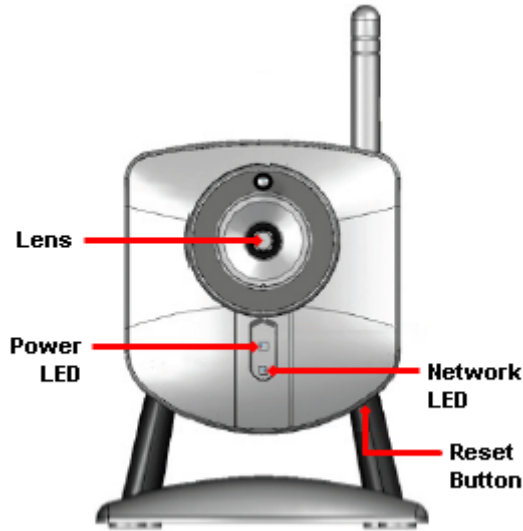


Figure 1: Front Panel

Lens	Fixed focus
Power LED	On (green) – Power on Off – Power off Blinking (green) – The Power LED blinks during power up. (This can take up to 20 seconds.)
Network LED	On (green) – LAN connection is detected Off – LAN connection is not detected Blinking (green) – Data is being transmitted or received On (amber) – The WPS is not processing data
Reset Button	With the <i>wireless camera</i> powered on, insert a pin or paperclip into the small opening and hold in place for at least ten seconds to reset the communication configuration settings.

IMPORTANT



The Reset button changes the wireless camera communication configuration settings and should only be used under the direction of ADT Support.

Rear

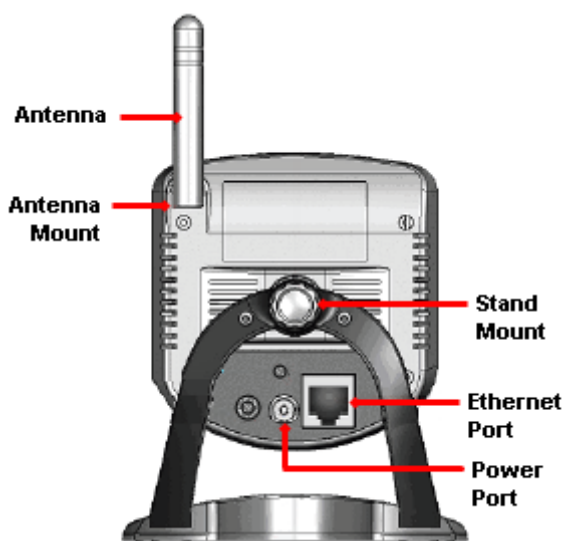


Figure 2: Rear Panel

Antenna (packaged separately)	Screw the antenna clockwise into the Antenna Mount until tightened.
Antenna Mount	Connects the antenna to the RC-802 1W Wireless Indoor Camera.
Stand Mount	Use the stand mount to connect the adjustable stand to the device.
Ethernet Port	Use the Ethernet port to connect a LAN cable to the ADT Pulse Gateway.
Power Port	The 5V power adapter input connects to the <i>wireless camera</i> power cord.

IMPORTANT



ADT Pulse does not support audio.

Installation

This section provides details for installing and configuring the RC802 1W-ADT Wireless Indoor Camera.

Configuring the RC802 1W-ADT

1. Attach the antenna to the antenna mount, located on the back of the *wireless camera*, turning clockwise until securely fastened.
2. Attach the adjustable camera stand to the stand mount, located on the back of the *wireless camera*, turning clockwise until securely fastened.

Adding the RC802 1W-ADT to the ADT Pulse Wireless Network

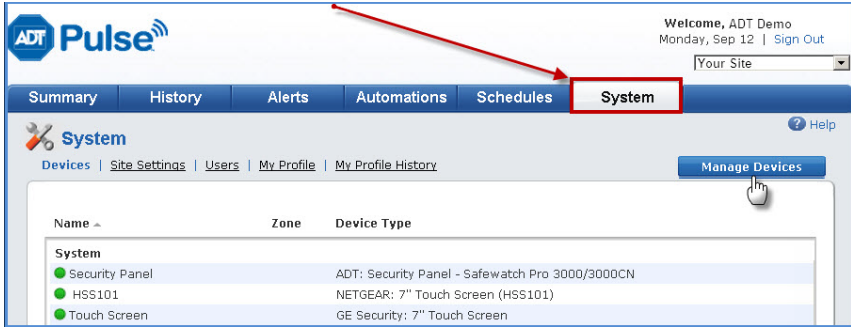


NOTE:

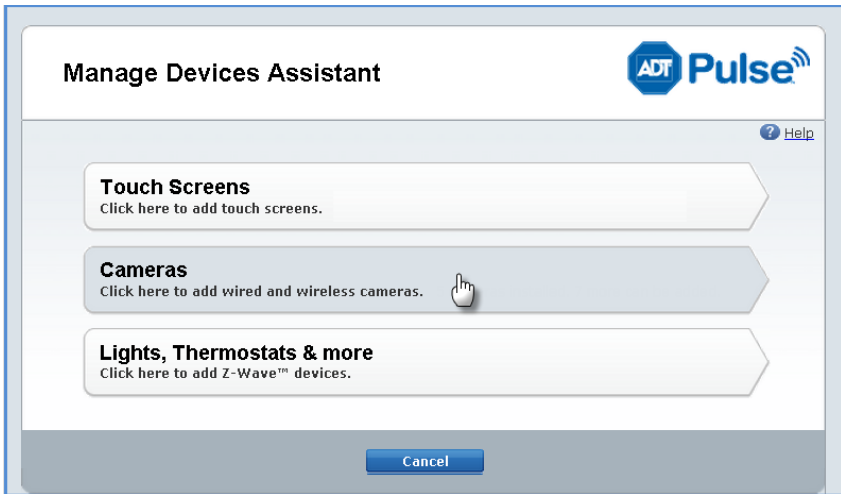
The *wireless camera* can only be added to an ADT Pulse system that supports video.

1. Open your web browser. In the address bar, type:
<https://Portal.ADTPulse.com>.
2. Type your **Username** and **Password**, and then click the **Sign In** button.

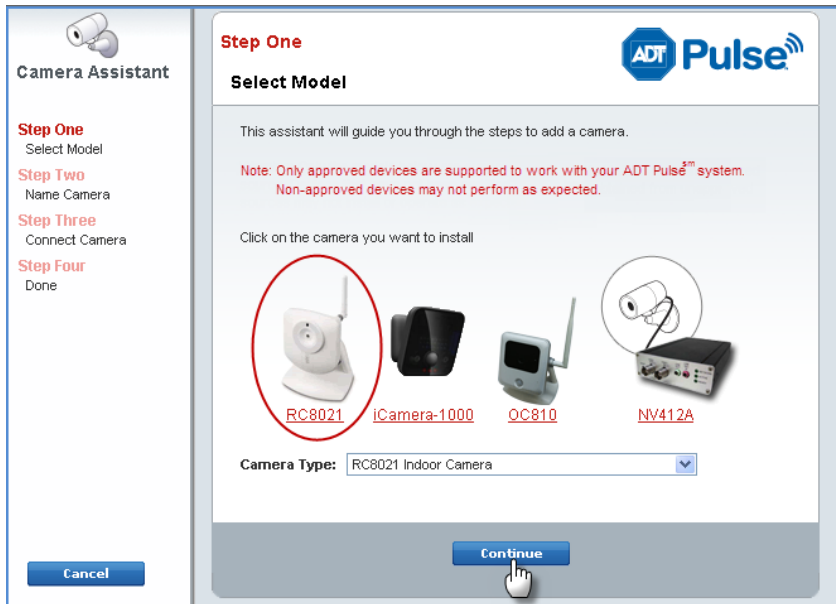
- Click the **System** tab, and then click the **Manage Devices** button.



- In the **Manage Devices Assistant**, click **Cameras**.



- Click the picture of the **RC8021** or select it from the drop-down list, and then click the **Continue** button.



- Assign the RC802 1W-ADT a unique name (this is usually based on the location of the *wireless camera*) in the space provided, and then type the *wireless camera*'s **MAC ID** or **Server Name**.



NOTE:

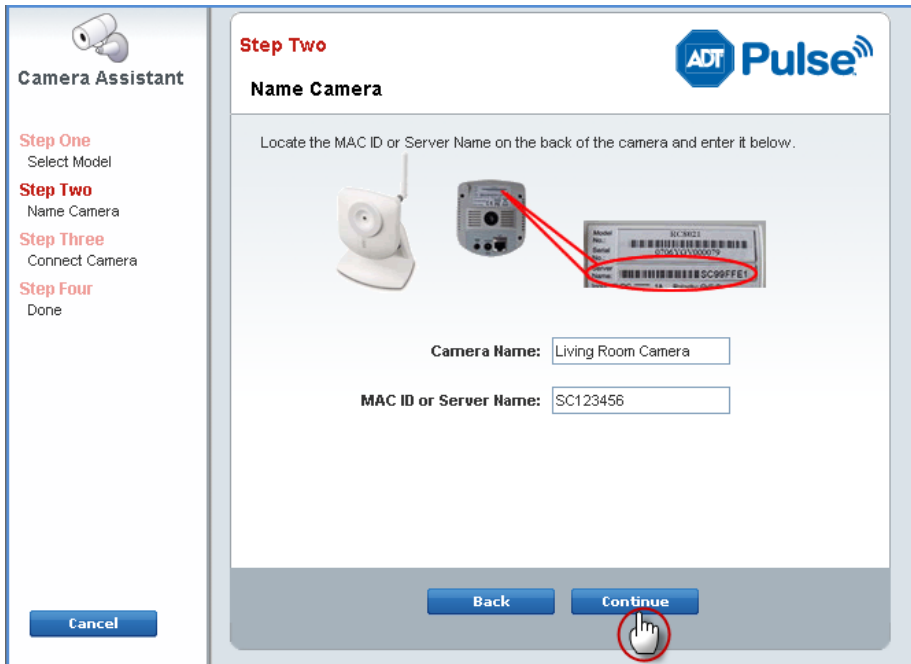
A valid MAC ID is 12 characters long and contains only numbers and/or the letters A-F.



NOTE:

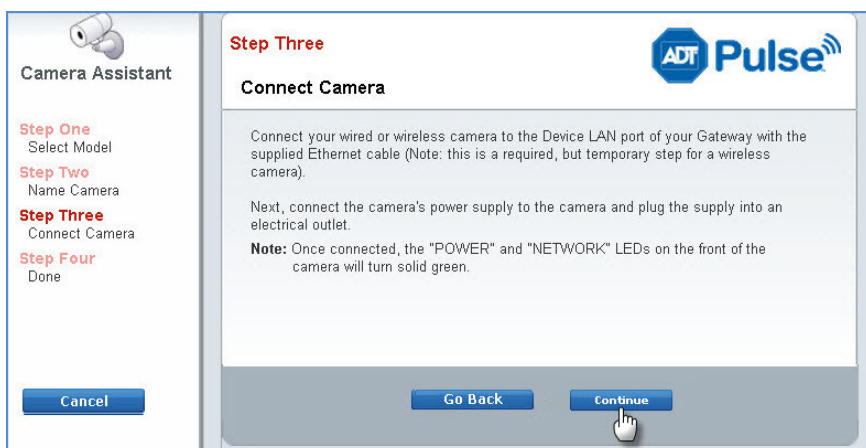
Older models of the RC802 1W-ADT Wireless Indoor Camera use Server Names.

- Click the **Continue** button.



- Connect the *wireless camera* to the Device Port of the gateway using a standard LAN cable.

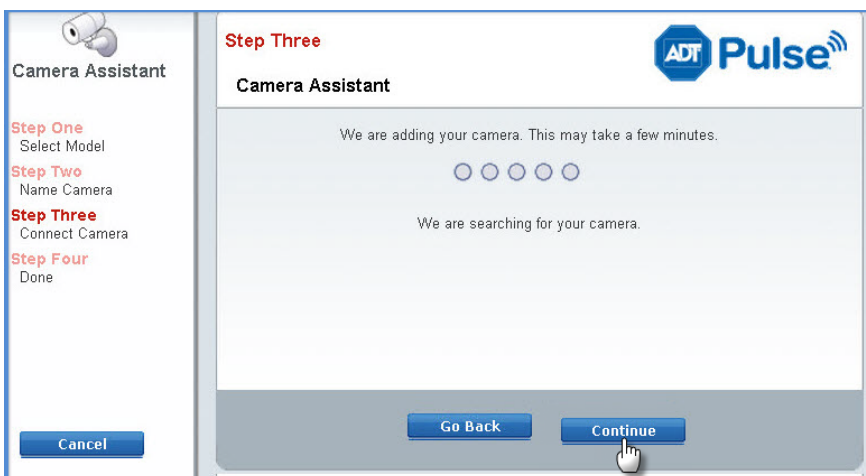
- Connect the supplied 5V power adapter to power up the *wireless camera*, and then click the **Continue** button.



NOTE:

The Power LED will turn on briefly then start blinking for approximately 15-20 seconds during startup. After startup is complete, both the Power LED and the Network LED will remain ON and turn solid green.

- Once connected, click the **Continue** button.



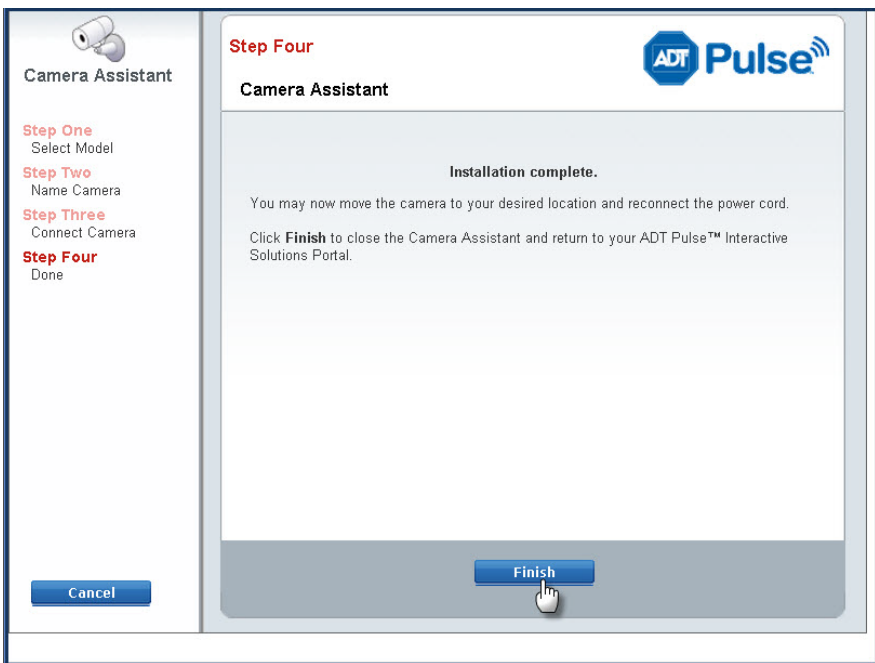
IMPORTANT



If the RC8021W-ADT fails to install, do the following:

1. Verify that power is properly connected to the wireless camera and to the outlet.
2. Verify that the LAN cable is securely fastened between the wireless camera and the gateway.
3. Verify that you have entered the correct MAC ID.
4. If the above steps do not resolve the issue, use the Reset Button on the Wireless Camera to restore default factory settings. (Refer to Page 2 of this guide for instructions on resetting the wireless camera.)

11. Once the *wireless camera* has been successfully added to the ADT Pulse wireless network click the **Finish** button. The installation is complete.



NOTE:

If the RC802 1W-ADT is outside the range of the wireless network, considering including the Wi-Fi Extender, Model Number: WN2RPADT-1ADNAS, for increased range.

Appendix A: Specifications

Model	RC8021W-ADT Wireless Indoor Camera
Dimensions (without stand)	3.4" x 3.7" x 1.4" (87mm x 94mm x 35mm)
Dimensions (with stand)	4.3" x 3.9" x 5.1" (110mm x 100mm x 130mm)
Operating Temperature	32°F to 104°F (0°C to 40°C)
Storage Temperature	-4°F to 158°F (-20°C to 70°C)
Network Protocols	TCP/IP
Network Interface	1 Ethernet 10/100BaseT (RJ45) LAN connection
LEDs	3
Power Adapter	5VDC / 1A

Appendix B: Regulatory Approvals

FCC Statement

This equipment generates uses and can radiate radio frequency energy and, if not installed and used in accordance with the instructions, may cause harmful interference to radio communications. However, there is no guarantee that interference will not occur in a particular installation. If this equipment does cause harmful interference to radio or television reception, which can be determined by turning the equipment off and on, the user is encouraged to try to correct the interference by one of the following measures:

- Reorient or relocate the receiving antenna.
- Increase the separation between the equipment and receiver.
- Connect the equipment into an outlet on a circuit different from that to which the receiver is connected.
- Consult the dealer or an experienced radio/TV technician for help.

To assure continued compliance, any changes or modifications not expressly approved by the party responsible for compliance could void the user's authority to operate this equipment. (Example - use only shielded interface cables when connecting to computer or peripheral devices).

FCC Radiation Exposure Statement

This equipment complies with FCC RF radiation exposure limits set forth for an uncontrolled environment. This equipment should be installed and operated with a minimum distance of 20 centimeters between the radiator and your body.

This device complies with Part 15 of the FCC Rules. Operation is subject to the following two conditions:

- (1) This device may not cause harmful interference, and
- (2) This device must accept any interference received, including interference that may cause undesired operation.

This transmitter must not be co-located or operating in conjunction with any other antenna or transmitter.

CE Approvals

The RC-802 1W-ADT Wireless Indoor Camera meets the guidelines of the European Union and comply with the 99/5/EEC and RTTE 99/5EG directives, including the following standards:

- EN60950
- EN300 328-2
- EN301 489-1
- EN301 489-17

This is a Class B product. In a domestic environment, this product may cause radio interference in which case the user may be required to take adequate measures.

This product is UL and cUL certified and comply with UL60950-1 Information Technology Equipment applicable requirement.