



**ADT Pulse[®] Interactive Solutions
RC8025B-ADT
Wireless Day/Night Camera
Installation Guide**

Table of Contents

INTRODUCTION 1

- Overview 1
 - RC8025B-ADT Features 1
- Package Contents 2
- Physical Details – RC8025B-ADT 3
 - Front Panel 3
 - Rear Panel 4

INSTALLATION 6

- Configuring and Installing the RC8025B-ADT 6
- Adding the RC8025B-ADT to the ADT Pulse Wireless System 7
- Wall Mounting Instructions 11
- Ceiling Mounting Instructions 13
- Video Motion Detection 14
 - Enabling Motion Detection via the ADT Security System 15

APPENDIX A: SPECIFICATIONS 17

APPENDIX B: REGULATORY APPROVALS 18

- FCC Statement 18
- CE Approvals 18

UNITED STATES LICENSE INFORMATION: **AL** Alabama Electronic Security Board of Licensure, 7956 Vaughn Rd., Montgomery 36116, (334) 264-9388; **AK** 37950, 5520 Lake Otis Pkwy., Anchorage, AK 99507; **AR** E12-041, Regulated by Arkansas Bd. of Private Investigators & Private Security Agencies, #1 State Police Plaza Dr., Little Rock, AR 72209, (501) 618-8600; **AZ** ROC 279591; **CA** ACO7155, alarm company operators are licensed and regulated by the Bureau of Security & Investigative Services, Dept. of Consumer Affairs, Sacramento, CA 95814, 974443, PPO17232; **CT** ELC.0106069-L5; **DC** ECS902743; **FL** EF0001121; **GA** LVA205265, -205326, -205572, -205679, -205878, LVU405673, -004349; **HI** CT-32297; **ID** ELE-SC-2643; **IL** 124001792; **LA** F1639, F1640, F1643, F1654, F1655; **MA** 172C; **MI** 3601206258, 5103208 - 4182 Pier North Dr. Ste. D, Flint, **MI** 48504; **MN** TS650251; **NC** 7535P2, 7561P2, 7562P10, 7563P7, 7565P1, 7566P9 - Alarm Systems Licensing Bd., 4901 Glenwood Ave, Ste. 200, Raleigh, 27612 (919) 788-5320; **NM** 374838; **NV** 0077105; **NJ** Electrical Contractor Lic. #'s 34FA00140500, 34BA00179000, 7895 Browning Rd., Pennsauken, NJ 08109; **NY** 12000305615, Licensed by NYS Dept. of State; **OH** 50-18-0018, 50-25-0023, 50-29-0003, 50-31-0014, 50-48-0008, 50-50-0005, 50-76-0006, 50-89-0016, 53-89-1726; **OK** 1995; **OR** 196560; **PA** Pennsylvania Home Improvement Contractor Registration Number: PA090797; **RI** 35683; **TN** ACC-1688, -1689, -1690, -1691, -1692, -1693, -1694, -1695, -1696; **TX** B17944 - 140 Heimer Rd. Ste. 100, San Antonio, **TX** 78232 - Texas Private Security Bureau, 5805 N. Lamar Blvd., Austin 78752; **UT** 8289653; **VA** 11-7345, 11-7348, 11-7351, 11-7354, 11-7598, 11-7900, 11-8205, 11-8353, 11-8447 2705147728 Class B Contractor Classification ESC; **WA** ADTLLL881DO, 11824 N Creek Pkwy #105, Bothell, WA 98011; **WI** 1210943; **WV** 049758.

MS 15019511

©2014 ADT LLC dba ADT Security Services. All rights reserved. ADT, the ADT logo, 800.ADT.ASAP and the product/service names listed in this document are marks and/or registered marks. Unauthorized use is strictly prohibited.

Canada Licence number: RBQ 3019-4070-50.

©2014 ADT Security Services Canada, Inc. All rights reserved. ADT, the ADT logo, 800.ADT.ASAP and the product/service names listed in this document are marks and/or registered marks. Unauthorized use is strictly prohibited.

Introduction

This installation guide provides step-by-step instructions for configuring and installing your RC8025B-ADT Wireless Day/Night Camera to your ADT Pulse® wireless network. Permanent mounting instructions for the Wireless Camera are also included.

Overview

The RC8025B-ADT Wireless Day/Night Camera (hereafter referred to as the *wireless camera*) has an Integrated Microcomputer and a high quality digital Image Sensor, enabling it to display high quality, live streaming video to your web or mobile client over an 802.11n Wireless LAN.

RC8025B-ADT Features

- **Standalone Design:** The *wireless camera* is a standalone device that requires a power source and a wireless connection to the ADT Pulse gateway.
- **Triple Video Support:** The *wireless camera* supports H.264 Baseline, MPEG-4 SP and MJPEG video compression.
- **Day/Night Switch:** With the automatic day/night switching feature, the *wireless camera* is able to view and record crisper images in the dark within a 5-meter area.
- **Standard Compliance:** The *wireless camera* complies with the IEEE802.11n (DSSS) specifications for Wireless LANs.
- **Supports 802.11n Wireless Stations:** The 802.11n Draft standard provides for backward compatibility with the 802.11g wireless network.
- **Security Support:** Full WEP (64/128 Bit), WPA and WPA2 Personal standards are supported on the Wireless interface allowing advanced encryption of wireless data.

Package Contents

1. RC8025B-ADT Wireless Day/Night Camera
2. Power Adapter
3. Ethernet Cable
4. Stand
5. Installation Guide

Physical Details – RC8025B-ADT

Front Panel

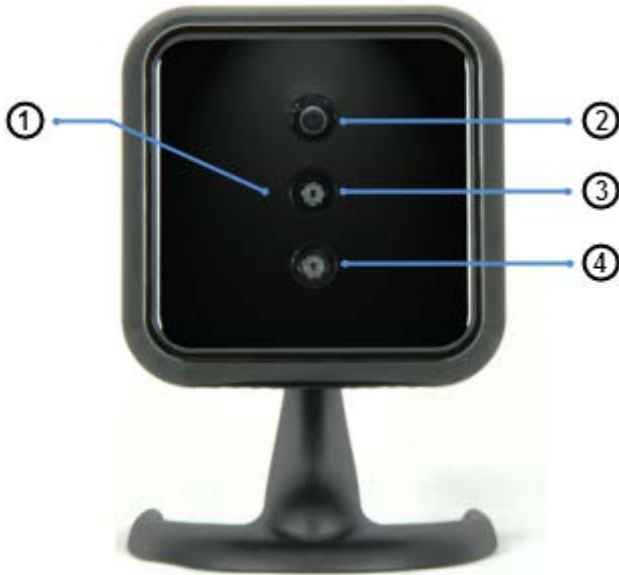


Figure 1: Front Panel

- | | |
|--|---|
| 1. Infrared LEDs (behind panel) | Six infrared light emitting diodes behind the front panel help you see clearly at night or in a dark environment. |
| 2. Daylight Sensor | This sensor detects daylight levels and adjusts the output lighting automatically. |
| 3. Night Camera Lens | The Night Camera Lens is used in a dark environment. |
| 4. Day Camera Lens | The Day Camera Lens is used in a bright environment. |

Rear Panel



Figure 2: Rear Panel

1. Power Port

This port is used to provide 12V to the *wireless camera* from the supplied power adapter.

IMPORTANT



DO NOT USE ANY POWER ADAPTER OTHER THAN THE ONE SPECIFIED FOR THIS CAMERA. DOING SO MAY DAMAGE THE WIRELESS CAMERA.

2. Ethernet Port

The Ethernet port enables connectivity of the *wireless camera* to your ADT Pulse gateway.

IMPORTANT



- **PLUGGING IN THE ETHERNET CABLE WILL DISABLE THE WIRELESS INTERFACE. (ONLY ONE INTERFACE CAN BE ACTIVE AT ANY TIME.)**
- **THE ETHERNET CABLE SHOULD ONLY BE CONNECTED OR DISCONNECTED WHEN THE DIGITAL CAMERA IS POWERED OFF. ATTACHING OR DETACHING THE ETHERNET CABLE WHILE THE CAMERA IS POWERED ON DOES NOT SWITCH THE INTERFACE BETWEEN WIRED AND WIRELESS.**
- **DETACHING THE ETHERNET CABLE WHEN THE OUTDOOR DIGITAL CAMERA IS POWERED ON WILL DISCONNECT THE OUTDOOR DIGITAL CAMERA FROM THE NETWORK.**

3. Reset/WPS Button

Reset

When pressed and held for ten (10) seconds, the communication configuration of the *wireless camera* is reset to the default manufacturer settings.

Wi-Fi Protected Setup (WPS)

WPS PBC Mode

1. Turn on the *wireless camera* without connecting the Ethernet cable.
2. Wait for three minutes, and then press and release (less than 3 seconds). The WPS LED starts blinking.
3. Press the WPS button on the gateway within two minutes. If the connection is successful, the WPS LED is off and the Network LED is on.

WPS Pin Code Mode

1. Turn on the *wireless camera* without connecting the Ethernet cable.
2. Wait for three minutes, and then press and hold the button for greater than three (3–10) seconds. The WPS LED starts blinking.
3. Obtain the pin code from the *WSC PIN Code* field of Wireless screen (camera’s web interface). Enter the pin code on the gateway within two minutes.

If the connection is successful, the WPS LED will be off and the Network LED will be on.

IMPORTANT



THE RESET BUTTON WILL RESET THE CAMERA COMMUNICATION CONFIGURATION SETTINGS AND SHOULD ONLY BE USED UNDER THE DIRECTION OF ADT SUPPORT.

4. Power Indicator (Green)

On - Power is on.

Off - Power is off.

Flashing - The Power LED blinks during power up. This takes about 60–90 seconds.

5. Network / WPS Indicator (Green/ Amber)

On (Green) - LAN/Wireless connection established

Off - No active connection on the corresponding LAN port, or not associated to Wireless AP

Flashing (Green) - Data is being transmitted or received.

On (Amber) - If the WPS association fails, the WPS LED is on continuously for 5 seconds.

Flashing (Amber) - WPS association is in process. The LED goes off when the connection is complete.

Installation

The following instructions provide details of configuring and installing the RC8025B-ADT Wireless Day/Night Camera to your ADT Pulse network.

Configuring and Installing the RC8025B-ADT

Initial setup is performed only one time to configure the camera's wireless settings to the ADT Pulse Gateway.



Figure 3: Initial Setup

1. Assemble the Camera

Attach the Camera Stand to the camera.

2. Connect the LAN Cable

Connect the *wireless camera* to a 10/100BaseT hub or switch, using a standard LAN cable.

3. Power Up

Connect the supplied 12V power adapter to the *wireless camera* and power up. Use only the power adapter provided. Using a different one may cause hardware damage.

- The Power LED turns on briefly, and then starts blinking. It blinks during startup, which takes 60 to 90 seconds. After startup is completed, the Power LED remains ON.
- The Network/WPS LED turns ON.

IMPORTANT

DO NOT USE ANY POWER ADAPTER OTHER THAN THE ONE SPECIFIED. DOING SO MAY DAMAGE THE DEVICE.

**NOTE:**

During start up, the Power LED displays for approximately 10 to 15 seconds. When installation is complete, the Power LED and the Network LED remain ON.

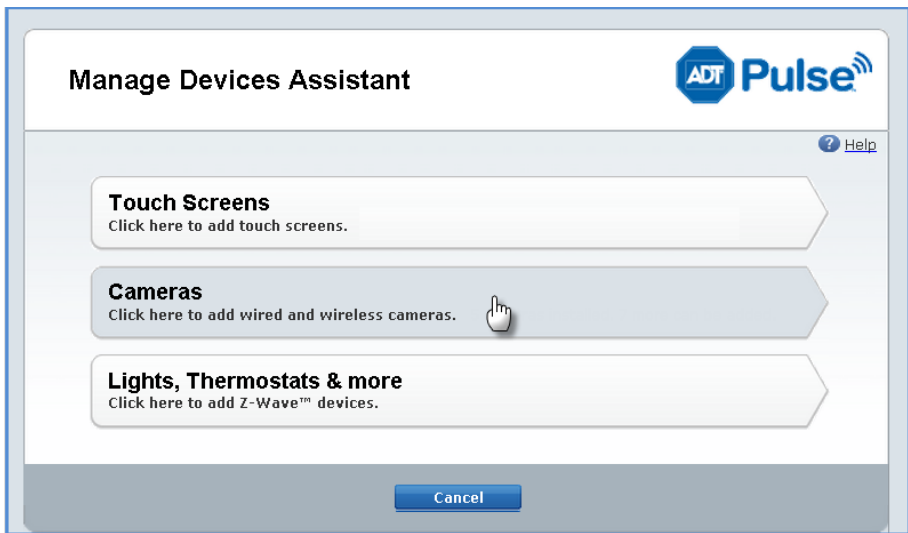
Adding the RC8025B-ADT to the ADT Pulse Wireless System

1. Open your web browser. In the address bar, type:
<https://Portal.ADTPulse.com>.
2. Type your **Username** and **Password**, and then click the **Sign In** button.

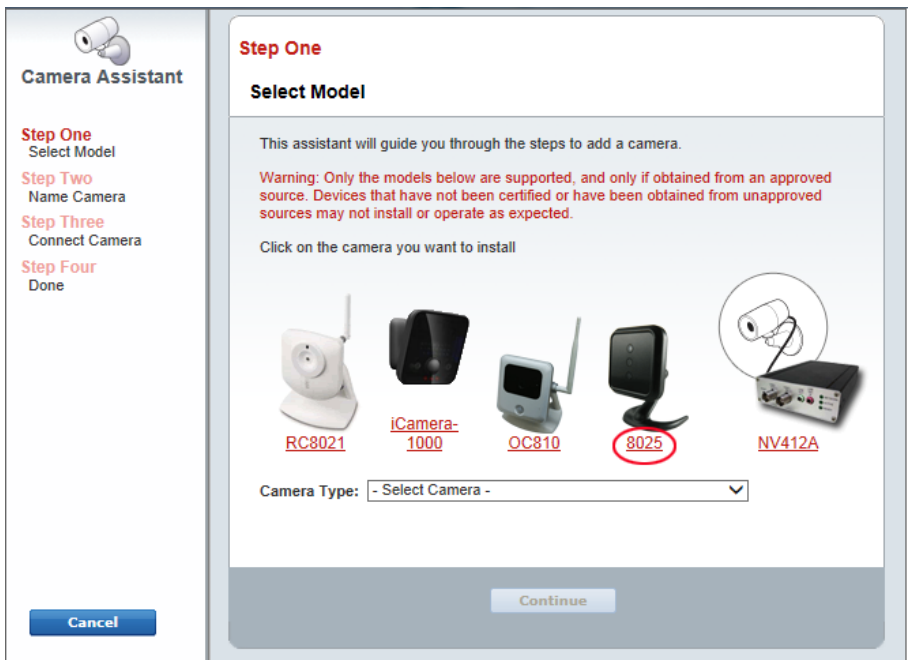
3. Click the **System** tab, and then click the **Manage Devices** button.

Name	Zone	Device Type
System		
● Security Panel		ADT: Security Panel - Safewatch Pro 3000/3000CN
● HSS101		NETGEAR: 7" Touch Screen (HSS101)
● Touch Screen		GE Security: 7" Touch Screen

4. In the **Manage Devices Assistant**, click **Cameras**.



5. Click the picture of the **RC8025** or select it from the drop-down list, and then click the **Continue** button.



6. Assign the *wireless camera* a unique name (this is usually based on the location of the *wireless camera*) in the space provided, and then type the *wireless camera*'s **MAC ID** or **Server Name**.

7. Click the **Continue** button.

Camera Assistant

Step One
Select Model

Step Two
Name Camera

Step Three
Connect Camera

Step Four
Done

Step Two
Name Camera

Locate the MAC ID on the back of the camera and enter it below.

Product Name: Wireless Network Camera
Model No.: RC8025
Serial No.: 1234ABC0000001
MAC: 000A1B23C4DE
PIN Code: 12345678

Camera Name:

MAC ID:

Back **Continue**

8. Connect the *wireless camera* to the Device Port of the gateway using a standard LAN cable.9. Connect the supplied 12V power adapter to power up the *wireless camera*.

Camera Assistant

Step One
Select Model

Step Two
Name Camera

Step Three
Connect Camera

Step Four
Done

Step Three
Connect Camera

Connect your wired or wireless camera to the Device LAN port of your Gateway with the supplied Ethernet cable (Note: this is a required, but temporary step for a wireless camera).

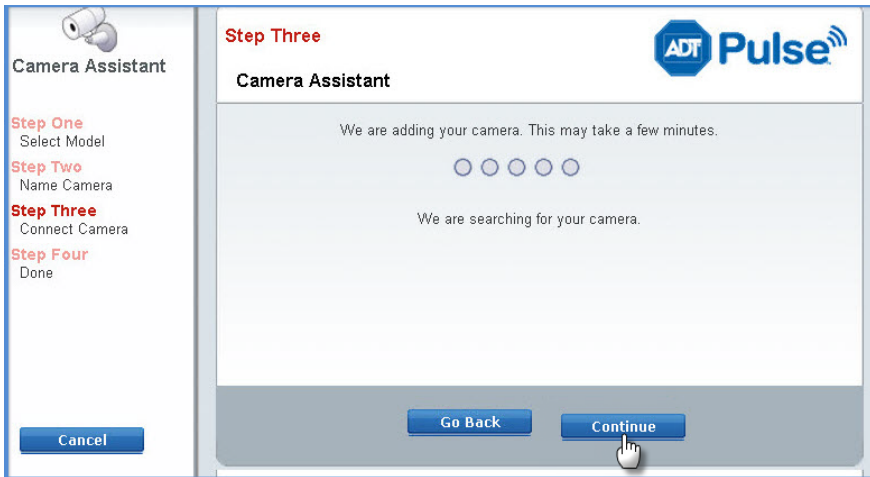
Next, connect the camera's power supply to the camera and plug the supply into an electrical outlet.

Note: Once connected, the "POWER" and "NETWORK" LEDs on the front of the camera will turn solid green.

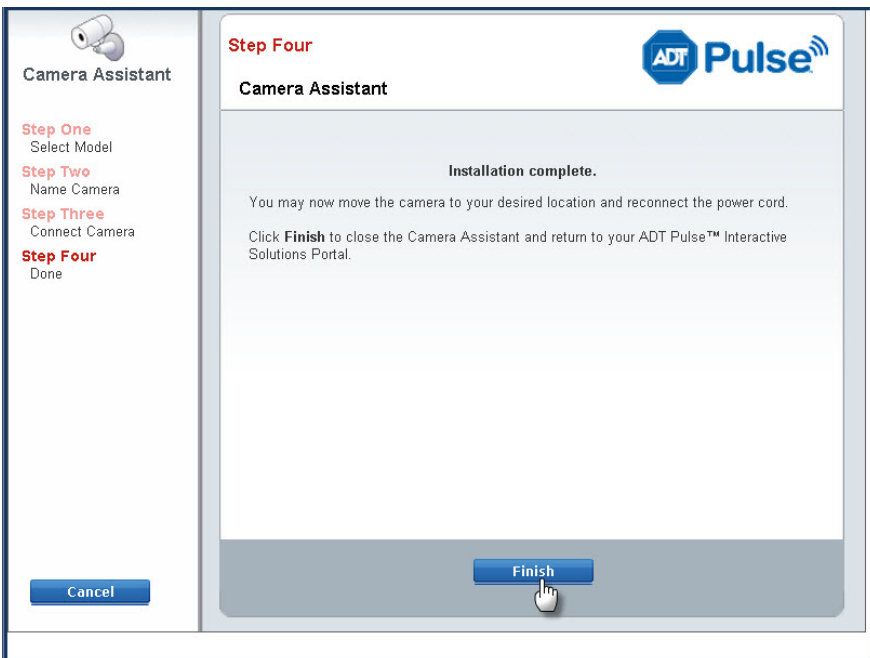
Go Back **Continue**

10. Once connected, click the **Continue** button.**NOTE:**

The Power LED will turn on briefly, and then start blinking. It will blink during startup which takes approximately 5 to 20 seconds. After startup is completed, the Power LED remains ON.



11. Click the **Finish** button. The installation is complete.



12. Disconnect the *wireless camera* from the gateway and remove from power.

13. Install the *wireless camera* in the final location.

14. Re-apply power.

If the camera does not connect, use of the ADT Wi-Fi extender, part # WN2RPADT-1ADNAS is recommended to improve connectivity.

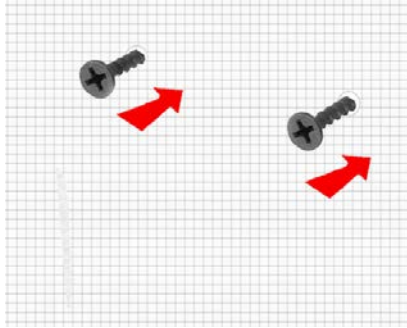
For more information, refer to **Physical Details** – on pages 3 through 5.

Wall Mounting Instructions

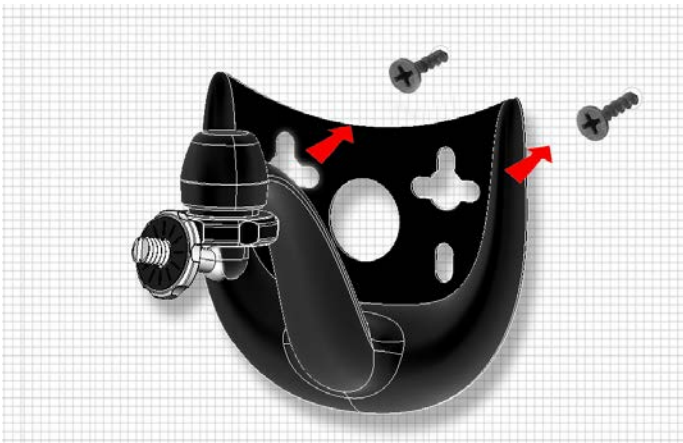
**NOTE:**

Ensure that the *wireless camera* is properly configured and added to the network before mounting the camera.

1. Identify the location for mounting the *wireless camera*.
2. Install and drive two M4 self-taping screws (not included in the package) 2/3 of the way into the wall. If necessary, drill a hole for Ethernet-cable wiring.



3. Align the two mounting holes at the bottom of the camera stand with the two screws, and mount the camera stand onto the wall.



4. Screw/attach the *wireless camera* onto the camera stand.
5. Connect one end of the Ethernet cable to the LAN port of the *wireless camera* and the other end into an available port on your router.

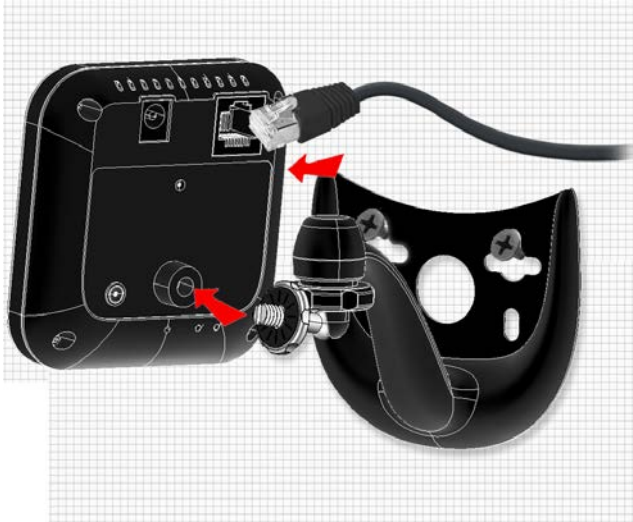
6. Connect the power cable into the back of the camera and plug the adapter end into a power outlet.



NOTE:

Use only the power adapter provided. Using a different one may lead to hardware damage.

7. Adjust the *wireless camera* to a desired orientation based on the video image on the touch panel, and secure the camera firmly.



Ceiling Mounting Instructions

1. Mount the *Wireless Camera*.
 - a. Use a screwdriver to tighten the screw of the stand base.
 - b. Attach the *wireless camera* to the swivel connector by turning it clockwise.



2. Complete the installation.
 - a. Make sure the *wireless camera* is firmly fixed on the ceiling.
 - b. Adjust the *wireless camera* to the preferred position.



Video Motion Detection

The motion event will be captured when a significant image changes within the Window of Interest. The Window of Interest is defined below.



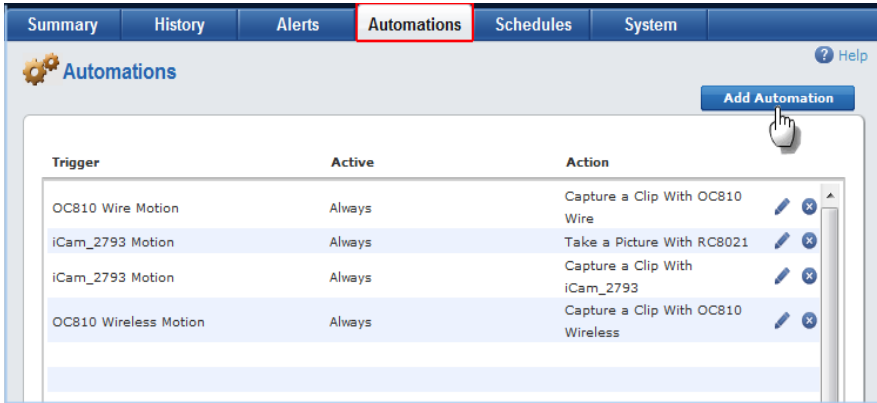
NOTE:

Video motion detection is susceptible to light reflection, shade or tree/leaves movement, etc. within the Window of Interest. To reduce the number of unwanted video events, please adjust the camera to reduce these noise factors appearing in the Window of Interest.

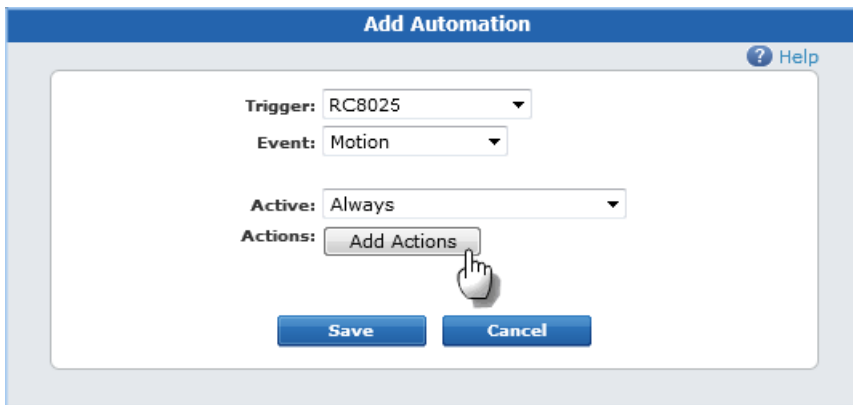
A video motion event also can be triggered by turning on/off a light.

Enabling Motion Detection via the ADT Security System

1. Click the **Automations** tab, and then click the **Add Automation** button.

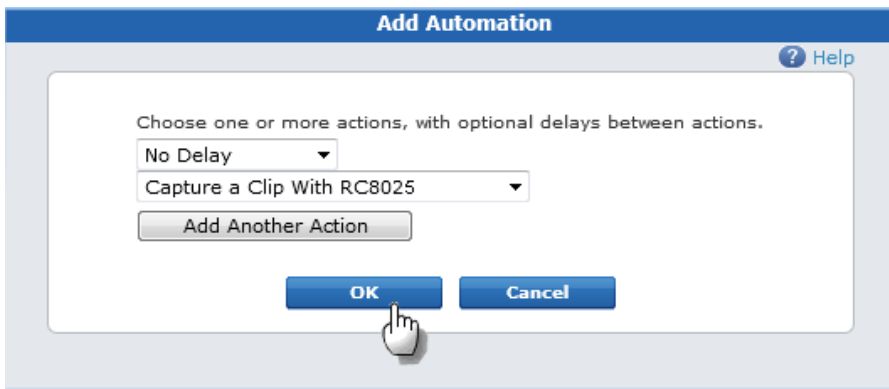


2. Select a trigger for this automation from the **Trigger** drop-down list.
3. Select **Motion** from the **Event** drop-down list.
4. Select the conditions under which you want the automation action to occur from **Active** drop-down list.
5. Click **Add Actions**.



6. From the **Delay** drop-down list, select the delay option you want to use for this action.
7. From the **Action** drop-down list, select the action you want to take place when the trigger occurs.

8. Click **OK**.



9. Click **Save**.

Appendix A: Specifications

Model	RC8025B-ADT Wireless Day/Night Camera
Dimensions H x W x D	3.11" x 3.11" x 1.14" 79 mm x 79 mm x 29 mm
Weight	0.22 lb (100 g)
Operating Temperature	32°F to 113°F (0°C to 45°C)
Storage Temperature	-4°F to 158°F (-20°C to 70°C)
Video Compression	H.264 Baseline, MPEG-4 SP and MJPEG
Network Interface	1 Ethernet 10/100BaseT (RJ45) LAN connection
LEDs	2 LED indicators and 6 IR LEDs
Wireless Interface	IEEE 802.11n/802.11b/802.11g compatible
Power Adapter	Input: 100-240 VAC; Output: 12V, 1A

Appendix B: Regulatory Approvals

FCC Statement

This equipment generates uses and can radiate radio frequency energy and, if not installed and used in accordance with the instructions, may cause harmful interference to radio communications. However, there is no guarantee that interference will not occur in a particular installation. If this equipment does cause harmful interference to radio or television reception, which can be determined by turning the equipment off and on, the user is encouraged to try to correct the interference by one of the following measures:

- Reorient or relocate the receiving antenna.
- Increase the separation between the equipment and receiver.
- Connect the equipment into an outlet on a circuit different from that to which the receiver is connected.
- Consult the dealer or an experienced radio/TV technician for help.

To assure continued compliance, any changes or modifications not expressly approved by the party responsible for compliance could void the user's authority to operate this equipment. (Example - use only shielded interface cables when connecting to computer or peripheral devices).

FCC Radiation Exposure Statement

This equipment complies with FCC RF radiation exposure limits set forth for an uncontrolled environment. This equipment should be installed and operated with a minimum distance of 20 centimeters between the radiator and your body.

This device complies with Part 15 of the FCC Rules. Operation is subject to the following two conditions:

- (1) This device may not cause harmful interference, and
- (2) This device must accept any interference received, including interference that may cause undesired operation.

This transmitter must not be co-located or operating in conjunction with any other antenna or transmitter.

CE Approvals

The RC8025B-ADT Wireless Day/Night Camera meets the guidelines of the European Union and complies with the 99/5/EEC and RTTE 99/5EG directives, including the following standards:

- EN60950
- EN300 328-2
- EN301 489-1
- EN301 489-17

This is a Class B product. In a domestic environment, this product may cause radio interference in which case the user may be required to take adequate measures.

This product is UL and cUL certified and comply with UL60950-1 Information Technology Equipment applicable requirement.