

An ADT Mobile Emergency Response System is not an intrusion detection or medical device and does not provide medical advice, which should be secured from qualified medical personnel. The System and Services rely on the availability of cellular network coverage and the availability of global positioning system (GPS) data to operate properly. These systems are not controlled by ADT. There is always a chance that the System may fail to operate properly. The 911 emergency services line is an alternative to the System and the Services. The Fall Detection pendant does not detect 100% of falls. If able, users should always push their Help button when they need assistance.

License information available at www.ADT.com or by calling 800.ADT.ASAP. **CA** ACO7155, 974443, PPO17232 **FL** EF0001121; **LA** F1639, F1640, F1643, F1654, F1655; **MA** 172C; **NC** Licensed by the Alarm Systems Licensing Board of the State of North Carolina; 7535P2, 7561P2, 7562P10, 7563P7, 7565P1, 7566P9, 7564P4; **NY** 12000305615; **PA** 090797; **MS15019511**

©2015 ADT LLC dba ADT Security Services. All rights reserved. ADT, the ADT logo, 800.ADT.ASAP and the product/service names listed in this document are marks and/or registered marks. Unauthorized use is strictly prohibited.



ADT On-The-Go Emergency Response System **Quick Installation Guide**

ADT.com/health



L9463-00



Quick Installation Guide

Thank you for choosing this **ADT Medical Alert System**. ADT is the most trusted name in security, with 140 years of experience. Live more confidently knowing that this system is ready 24/7/365. At the press of a button, a trained ADT professional can speak to you and get help if needed.

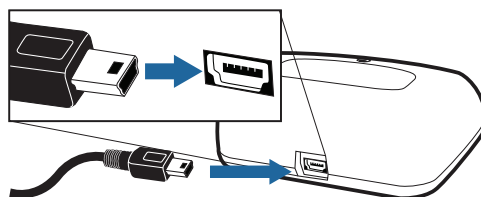
Step 1: Select a Location

- Place the Mobile Device cradle charger near the center of your home or in your bedroom.
- Place it near an electrical outlet.



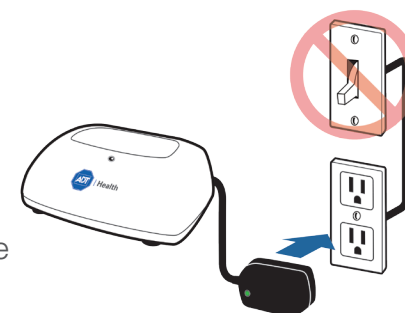
Step 2: Connect the Cradle Charger

- Plug the power cord into the slot on the back of the Cradle Charger, making sure that the narrow side is on the bottom.



Step 2 Cont'd

- Plug the other end of the power cord into an electrical outlet that is not controlled by a light switch.
- The green LED light on the plug of the power cord should illuminate.



Step 3: Call ADT® to Activate your System

- Call **800.568.1216** and select **option 1**.

