

Get help in three easy steps



1. Press the button

Press the personal help button to send an emergency alert to ADT. Fall Detection pendants can automatically send an alert if a fall occurs.*



2. We respond

ADT's monitoring professionals will communicate with you via two-way voice to determine what kind of help is needed.



3. You get help

At the push of a button, ADT's monitoring professionals will alert your caregivers, loved ones or emergency responders based on your needs and preferences.



Medical Alert

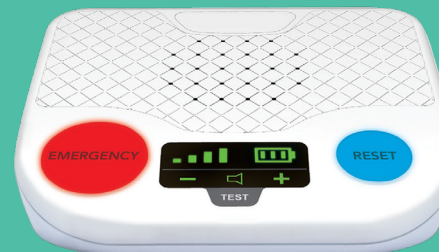
*Fall Detection pendant does not detect 100% of falls.

©2021 ADT LLC dba ADT Security Services. All rights reserved. ADT, the ADT logo, 800.ADT.ASAP and the product/service names listed in this document are marks and/or registered marks. Unauthorized use is strictly prohibited. Third-party marks are the property of their respective owners. License information available at www.ADT.com or by calling 800.ADT.ASAP. CA ACO7155, 974443, PPO120288; FL EF0001121; LA F1639, F1640, F1643, F1654, F1655; MA 172C; NC Licensed by the Alarm Systems Licensing Board of the State of North Carolina, 7535P2, 7561P2, 7562P10, 7563P7, 7565P1, 7566P9, 7564P4; NY 12000305615; PA 090797;

MS 15019511

L190376 06/19

QUICK INSTALLATION GUIDE Medical Alert Plus System



Medical Alert

Quick setup guide

Follow these simple steps to get your system set up and tested for the first time.



STEP ONE

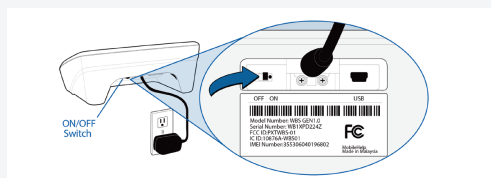
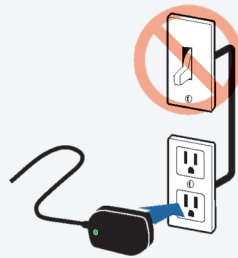
Open your ADT Medical Alert box

This includes a cellular base station and neck pendant or wristband.

STEP TWO

Plug the power cord into an electrical outlet

The electrical outlet should not be controlled by a light switch.



STEP THREE

Set the power switch on the back of the base station to the "On" position

The signal strength bars, the emergency and reset buttons will light up in 10 seconds when turned on. If the base station is set up correctly, it will say "system ready" within 60 seconds.

STEP FOUR

Call ADT to activate your system

Test your system for the first time with an ADT agent to ensure your system is working properly. Please call (800) 568-1216, option 2.

Monitoring center phone number

(800) 568-1216
Option 1

- If you or your emergency contact receives a call from this number, please answer.
- If you need to call ADT back, dial the number as it appears on the caller ID to avoid any delays.

Be sure you and your emergency contact save the monitoring center's phone number (800) 568-1216, option 1 so you never miss a call from us.

Testing your system

For monthly testing, you can use the test button on your cellular base station to conduct a test without speaking to an emergency response operator by following these steps:

STEP ONE

Touch and hold the test button for about 6 seconds

When the base station announces "User auto-test," release the button. The base station will instruct you to press the emergency button or pendant.



STEP TWO

Press the emergency button on the base station or pendant

The base station will announce, "Test call sent to emergency response center."

If the test was successful

The base station will announce, "Thank you for testing your device."

If the test was unsuccessful

The base station will announce, "User auto-test failed. Please contact customer support."

